

3rd Floor Area:

Portion with at least 7'-0" headroom: 465 sq. ft.

4th Floor - (see next sheet)

Total Area (3rd & 4th Floors):

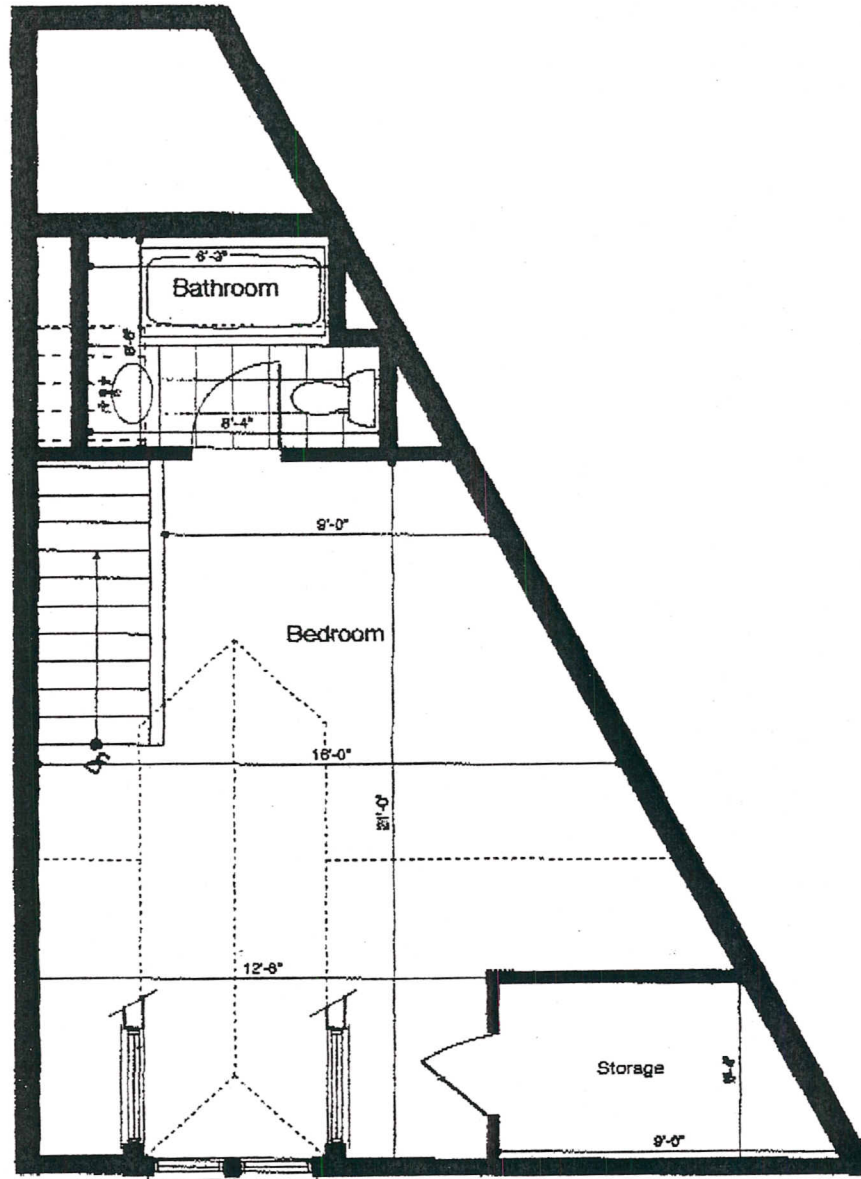
Portion with at least 7'-0" headroom: 745 sq. ft.

Portion with less than 7'-0" headroom: 170 sq. ft.

Adjusted Total Area*: 830 sq. ft.

*Area which is less than 7'-0" is counted as half

NOTE: The area square footage calculations represented herein are approximate and do not reflect as-built construction. The dimensions represented herein are approximate and do not reflect as-built construction.



4th Floor Area:
Portion with at least 7'-0" headroom: 280 sq. ft.
Portion with less than 7'-0" headroom: 170 sq. ft.
3rd Floor - (see previous sheet)
Total Area (3rd & 4th Floors):
Portion with at least 7'-0" headroom: 745 sq. ft.
Portion with less than 7'-0" headroom: 170 sq. ft.
Total Adjusted Area*: 830 sq. ft.

*Area which is less than 7'-0" is counted as half

NOTE: The area square footage calculations represented herein are approximate and do not reflect as-built construction.

The dimensions represented herein are approximate and do not reflect as-built construction.