

3rd Floor Area:

Portion with at least 7'-0" headroom: 665 sq. ft.

4th Floor - (see next sheet)

Total Area (3rd & 4th Floors):

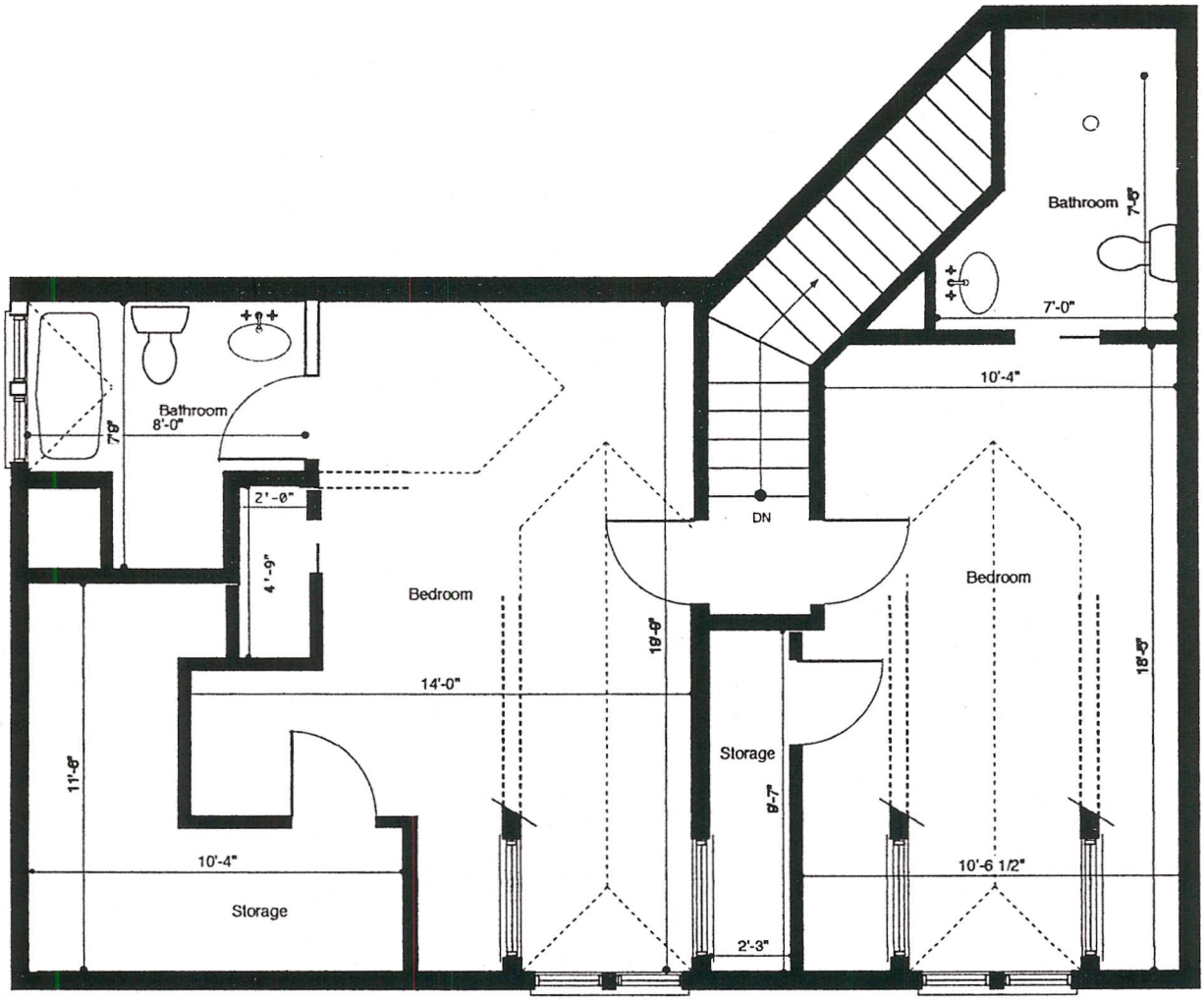
Portion with at least 7'-0" headroom: 1,165 sq. ft.

Portion with less than 7'-0" headroom: 270 sq. ft.

Adjusted Total Area*: 1,300 sq. ft.

*Area which is less than 7'-0" is counted as half

NOTE: The area square footage calculations represented herein are approximate and do not reflect as-built construction. The dimensions represented herein are approximate and do not reflect as-built construction.



4th Floor Area:

Portion with at least 7'-0" headroom: 500 sq. ft.
Portion with less than 7'-0" headroom: 270 sq. ft.

3rd Floor - (see next sheet)

Total Area (3rd & 4th Floors):

Portion with at least 7'-0" headroom: 1,165 sq. ft.
Portion with less than 7'-0" headroom: 270 sq. ft.
Adjusted Total Area*: 1,300 sq. ft.

*Area which is less than 7'-0" is counted as half

NOTE: The area square footage calculations represented herein are approximate and do not reflect as-built construction. The dimensions represented herein are approximate and do not reflect as-built construction.